

Non -Living Components Ergastic ()

Substance

-: Crystals -1

/

-

-: *

Needle -: Needle crystals -1

Raphides

. Mirabius Allium

-.: (Rosette) Druses crystals -2

Nerium oleander

Tilia

-.: Prismatic crystals -3

Allium

Stalk -: Cystolith crystals -4

Ficus elastica

/

-

Lithocyte -:

. Lithocyts

HCl () /

HCl /

Sio₂ -: Silica body -2

Cyperaceae

Gramineae

. Short cell

-: Starch grains -3

hilum -: Simple Starch -

-: Semicompound Starch -

-: Compound Starch -

-: Cracked -

Dahlia

-: Aleurone grain -4

Crystalline protein -1

Amorphous Protein -2

+ Globulin Globoid -1

Albumin Crystalloid -2

-3

endosperm ()

Triticum

Ricinus

:

Mirabilis

-1

Allium cepa

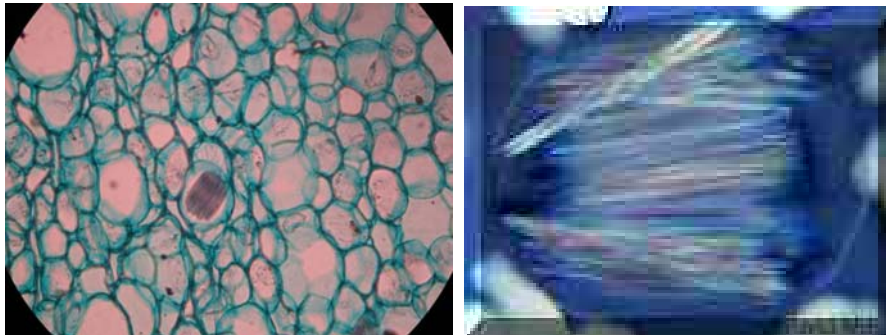


Yucca

-2

Raphides

Tradescantia



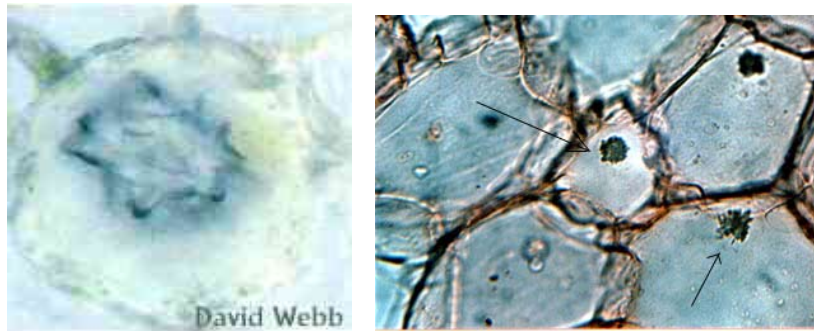
Allium sativum

-3



Tilia

-4

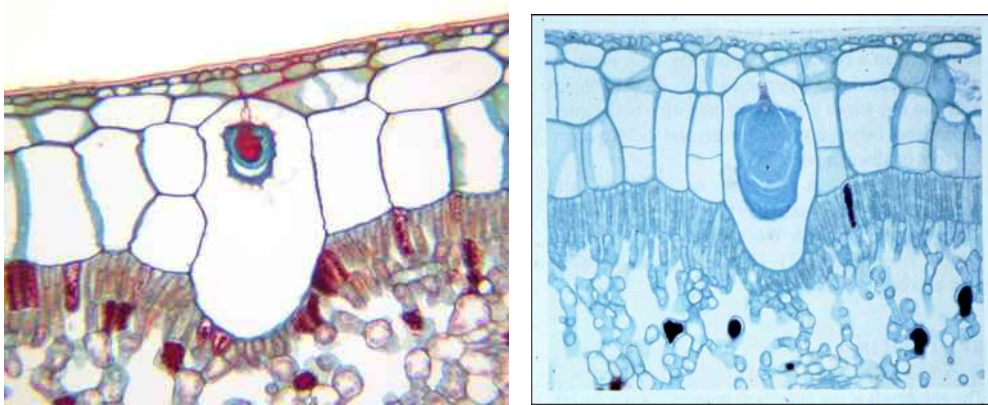


Ficus

-5

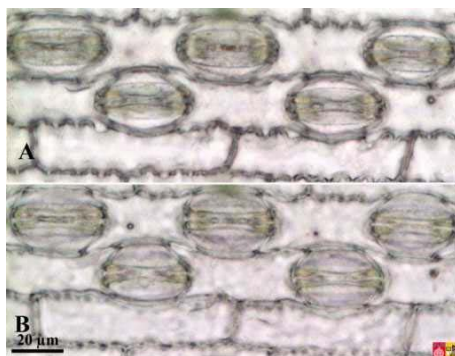
Cystolith ()

elastica

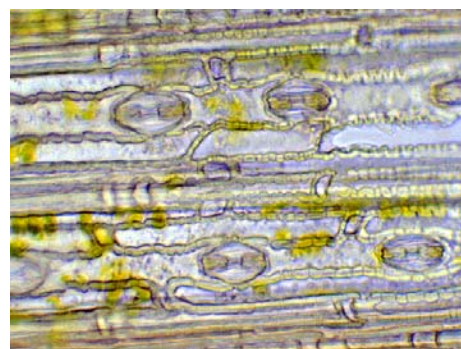


grasses

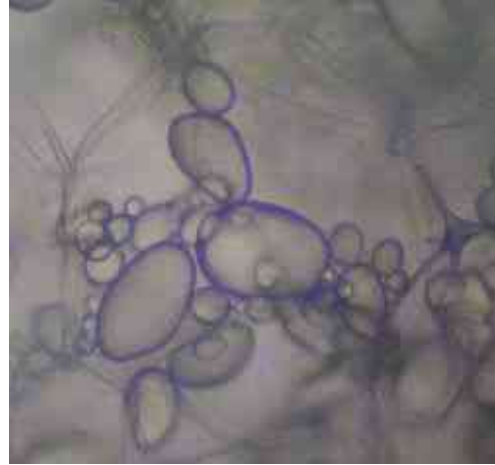
-6



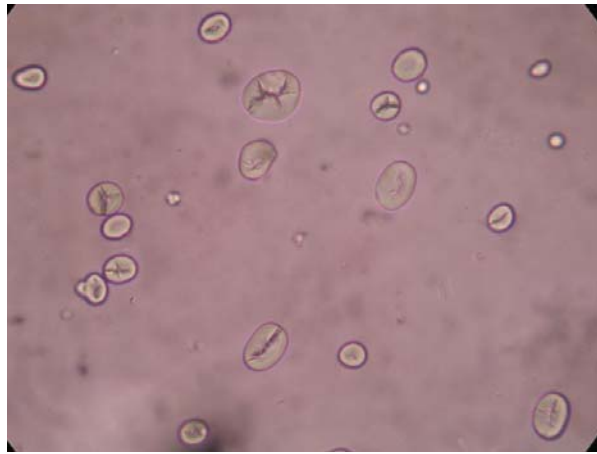
Solanum tuberosum



-7



-8



Ricinus

-9

endosperm

