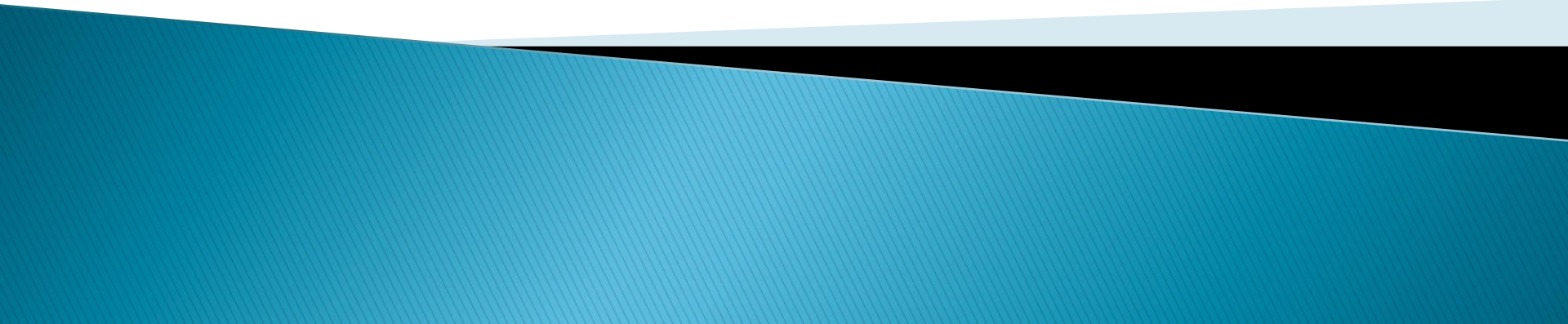


Anatomy of the Cow's reproductive tract



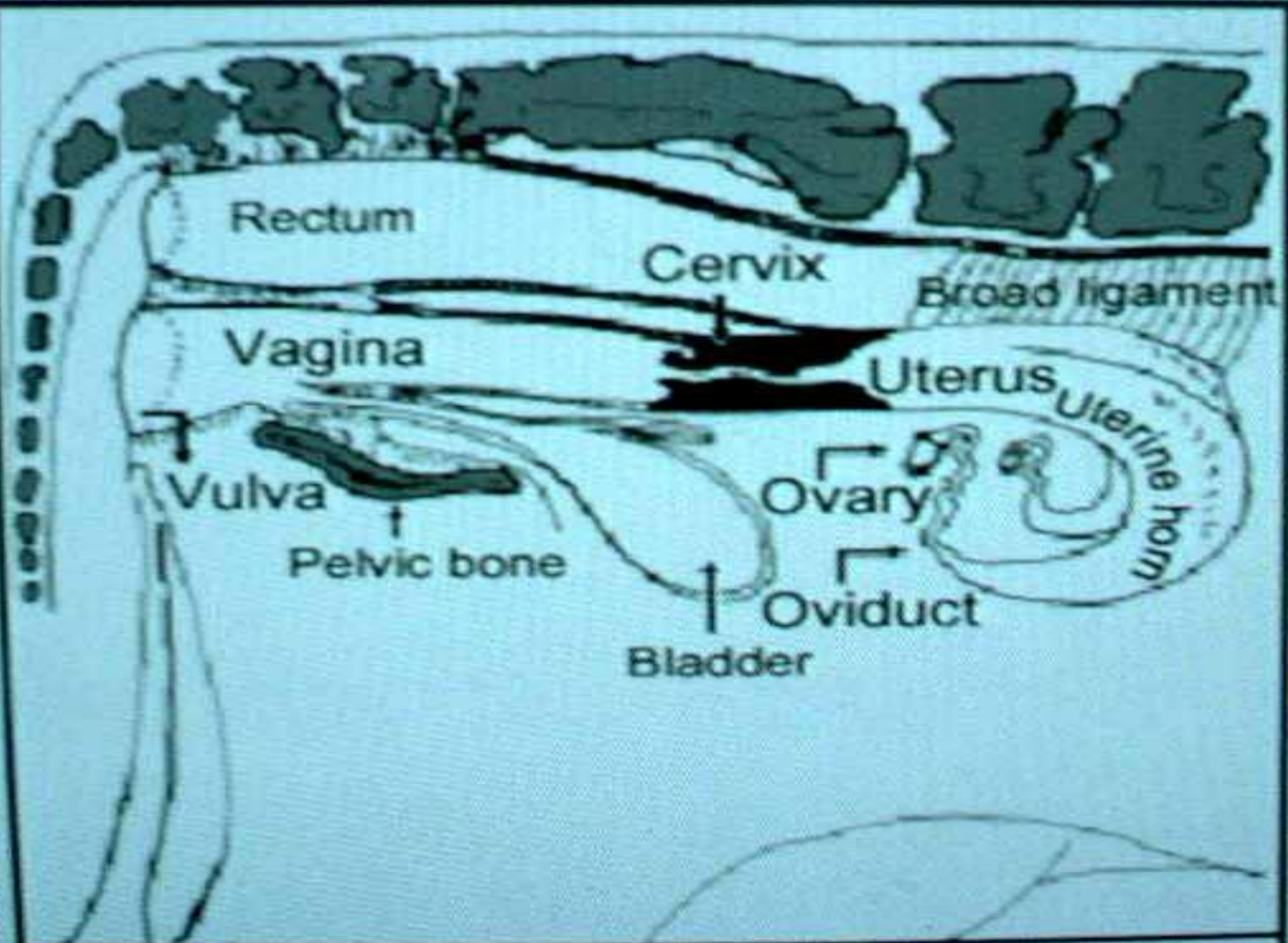
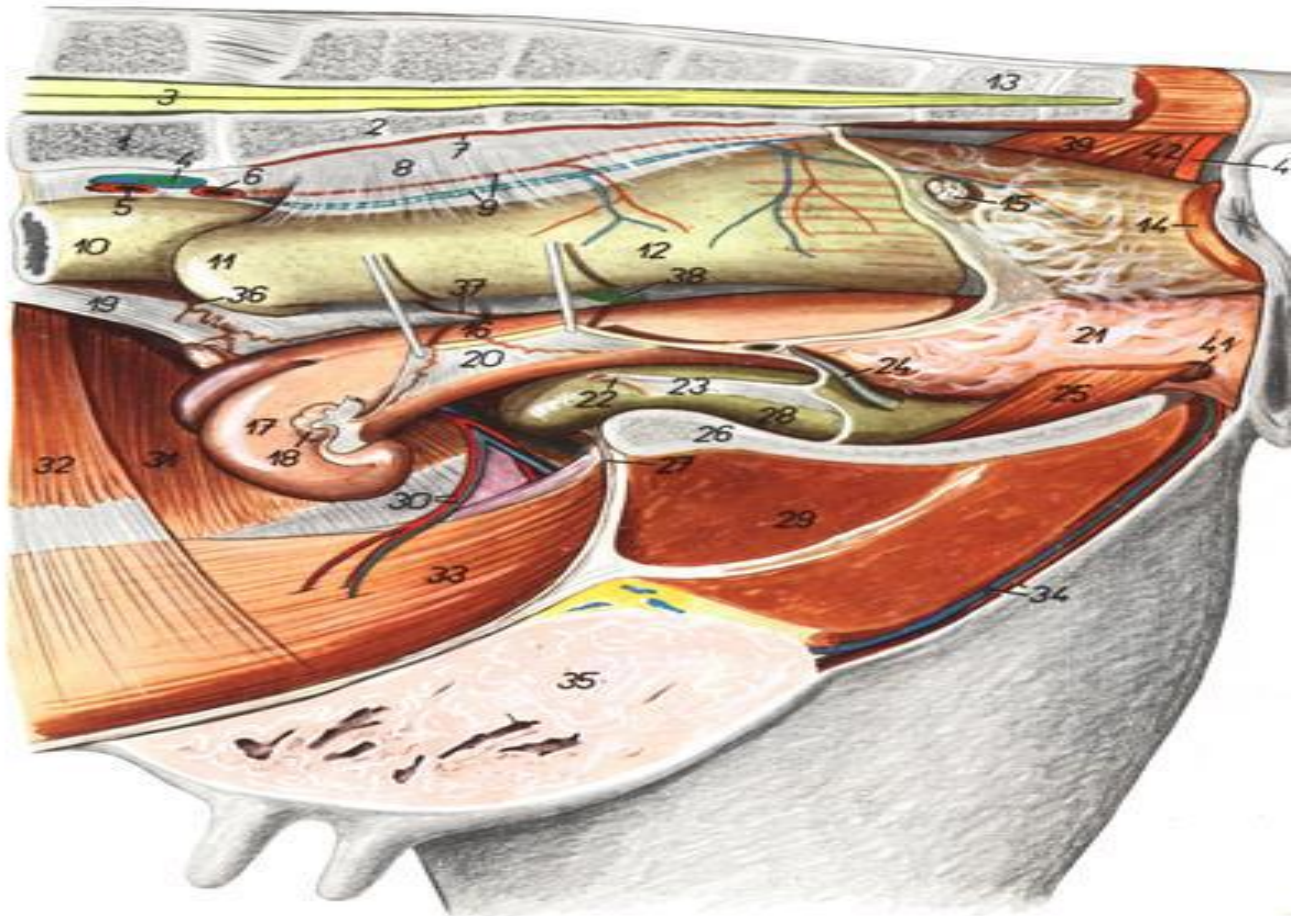


Figure 1: The reproductive tract of a cow

Bovine. Pelvic organs of cow in situ. View of left side. Left pelvic limb and left half of pelvis removed.

Figure 45



- 1. *vertebra lumbalis 6* — sixth lumbar vertebra
- 2. *os sacrum* — sacrum
- 3. *medulla spinalis* — spinal medulla
- 4. *v. iliaca communis sinistra* — left common iliac vein
- 5. *a. iliaca externa sinistra* — left external iliac artery
- 6. *a. iliaca interna sinistra* — left internal iliac artery
- 7. *a. sacralis mediana* — median sacral artery
- 8. *mesorectum* — mesorectum
- 9. *a. et v. rectalis cranialis* — cranial rectal artery and vein
- 10. *colus descendens* — descending colon
- 11. *colus sigmoideus* — sigmoid colon
- 12. *rectum* — rectum
- 13. *vertebra coccygea I* — first coccygeal vertebra
- 14. *m. sphincter ani externus* — external anal sphincter muscle
- 15. *ln. anorectalis* — anorectal lymph node
- 16. *corpus uteri* — body of uterus
- 17. *cornu uteri sinistrum* — left horn of uterus
- 18. *ovarium sinistrum* — left ovary
- 19. *lig. latum uteri dextrum* — right broad ligament of uterus
- 20. *lig. latum uteri sinistrum* — left broad ligament of uterus
- 21. *vagina* — vagina
- 22. *a. umbilicalis* — umbilical artery
- 23. *lig. laterale vesicae* — lateral ligament of bladder
- 24. *ureter sinister* — left ureter
- 25. *m. constrictor vestibuli* — constrictor vestibuli muscle
- 26. *facies symphysealis ossis coxae* — symphyseal surface of os coxae

- 27. *lig. medianum vesicae* — middle ligament of bladder
- 28. *vesica urinaria* — urinary bladder
- 29. *m. gracilis et m. adductor* — gracilis and adductor muscles
- 30. *a. et v. epigastrica caudalis* — caudal epigastric artery and vein
- 31. *m. obliquus internus abdominalis* — internal oblique abdominal muscle
- 32. *m. transversus abdominalis* — transverse abdominal muscle
- 33. *m. rectus abdominalis* — straight abdominal muscle

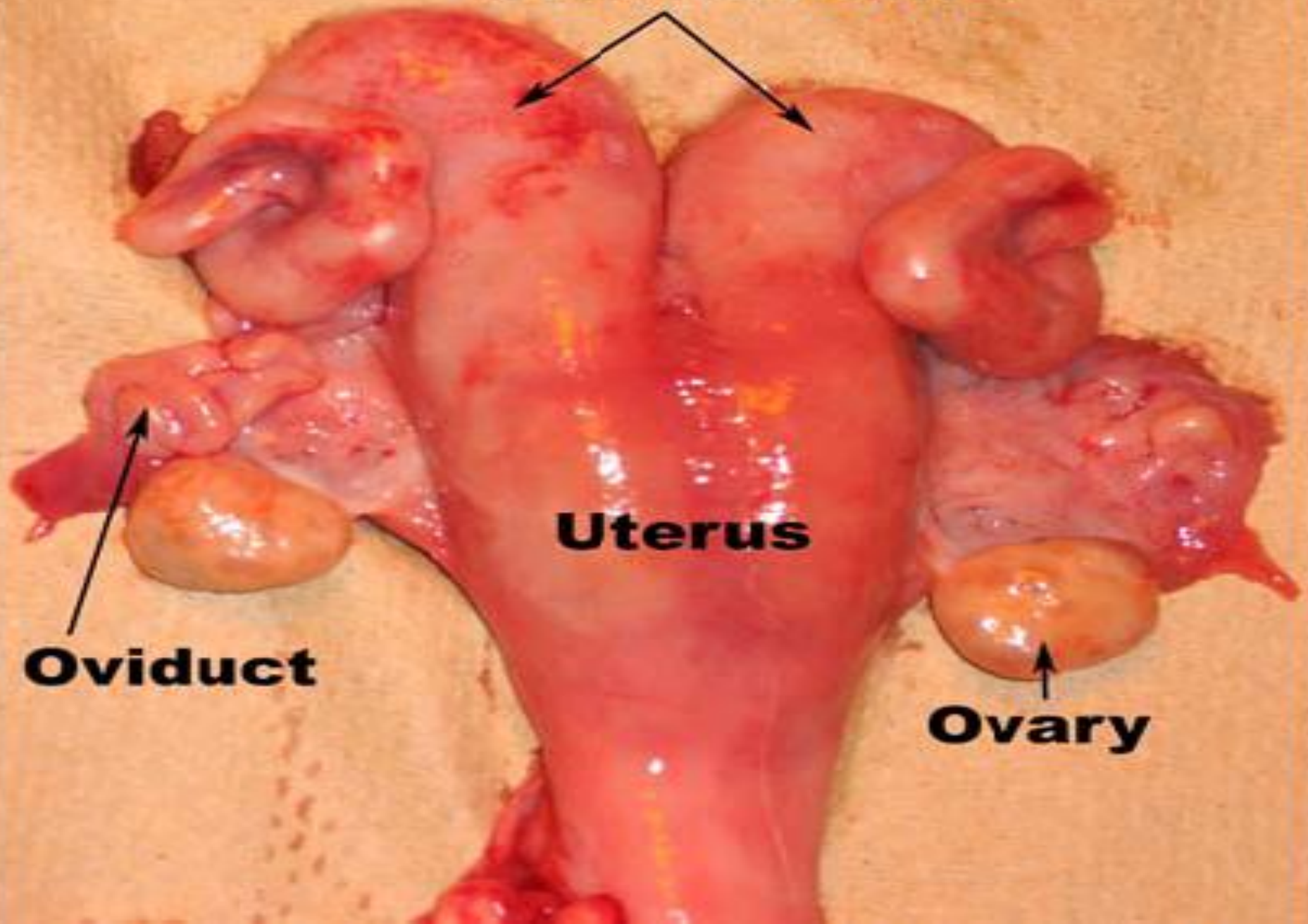
- 34. *a. et v. perinealis ventralis* — ventral perineal artery and vein
- 35. *corpus mammae (uberis)* — mammary body (udder)
- 36. *a. ovarica* — ovarian artery
- 37. *a. uterina* — uterine artery
- 38. *ureter dexter* — right ureter
- 39. *m. coccygeus dexter* — right coccygeal muscle
- 40. *m. retractor clitoridis* — retractor clitoridis muscle
- 41. *glandula vestibularis major* — major vestibular gland
- 42. *m. levator ani* — levator ani muscle

Uterine horns

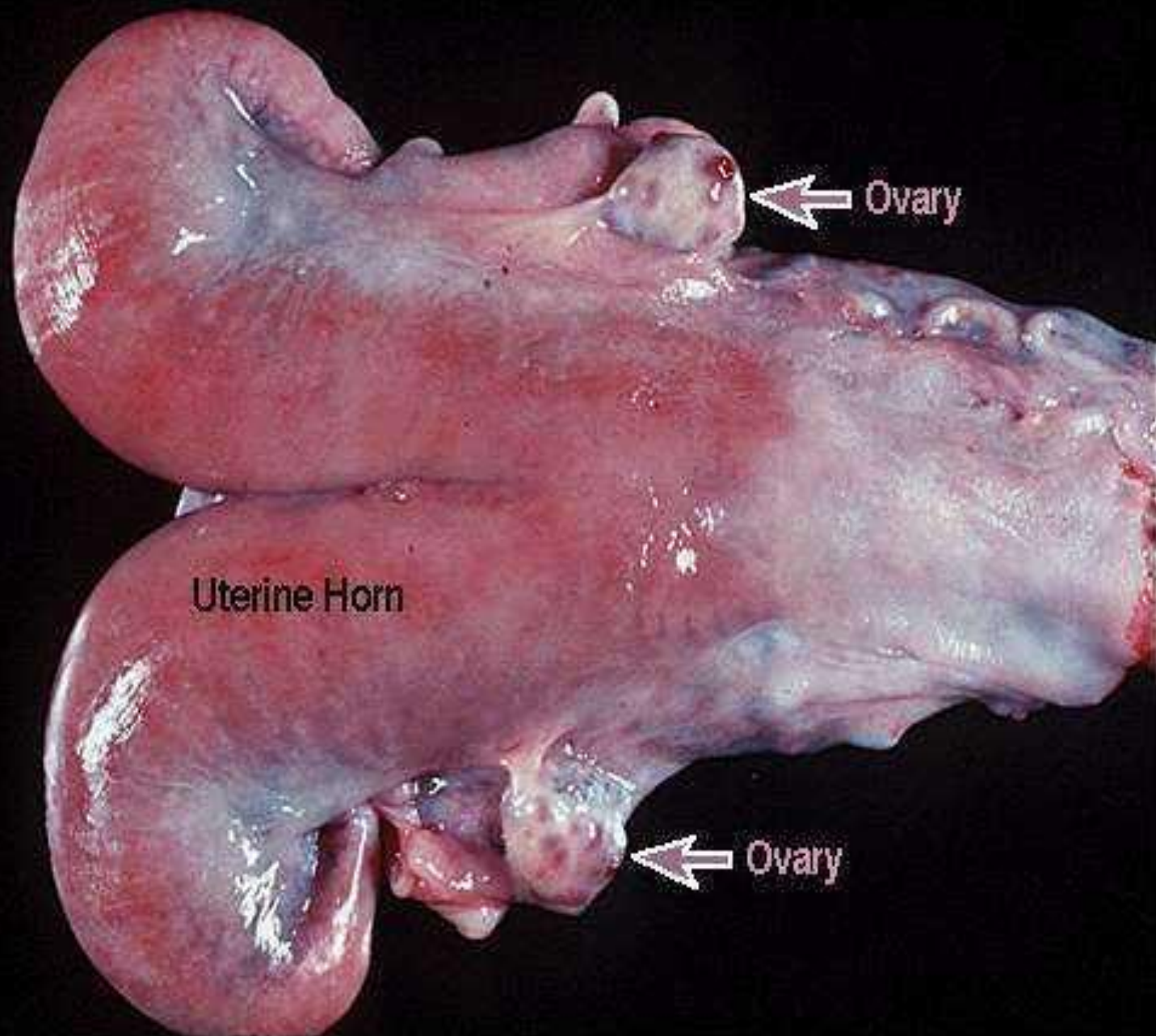
Uterus

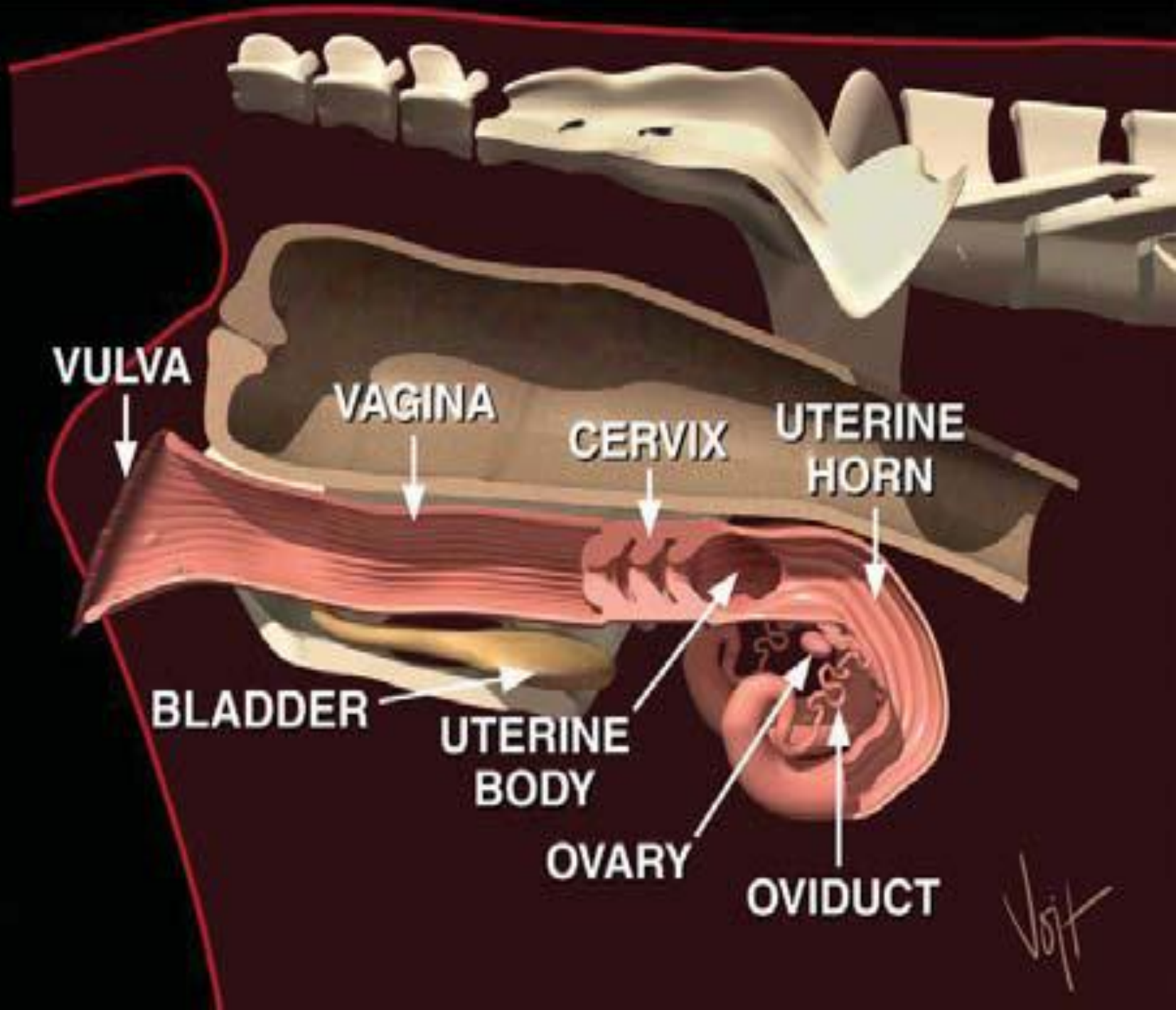
Oviduct

Ovary



NORMAL REPRODUCTIVE TRACT (COW)

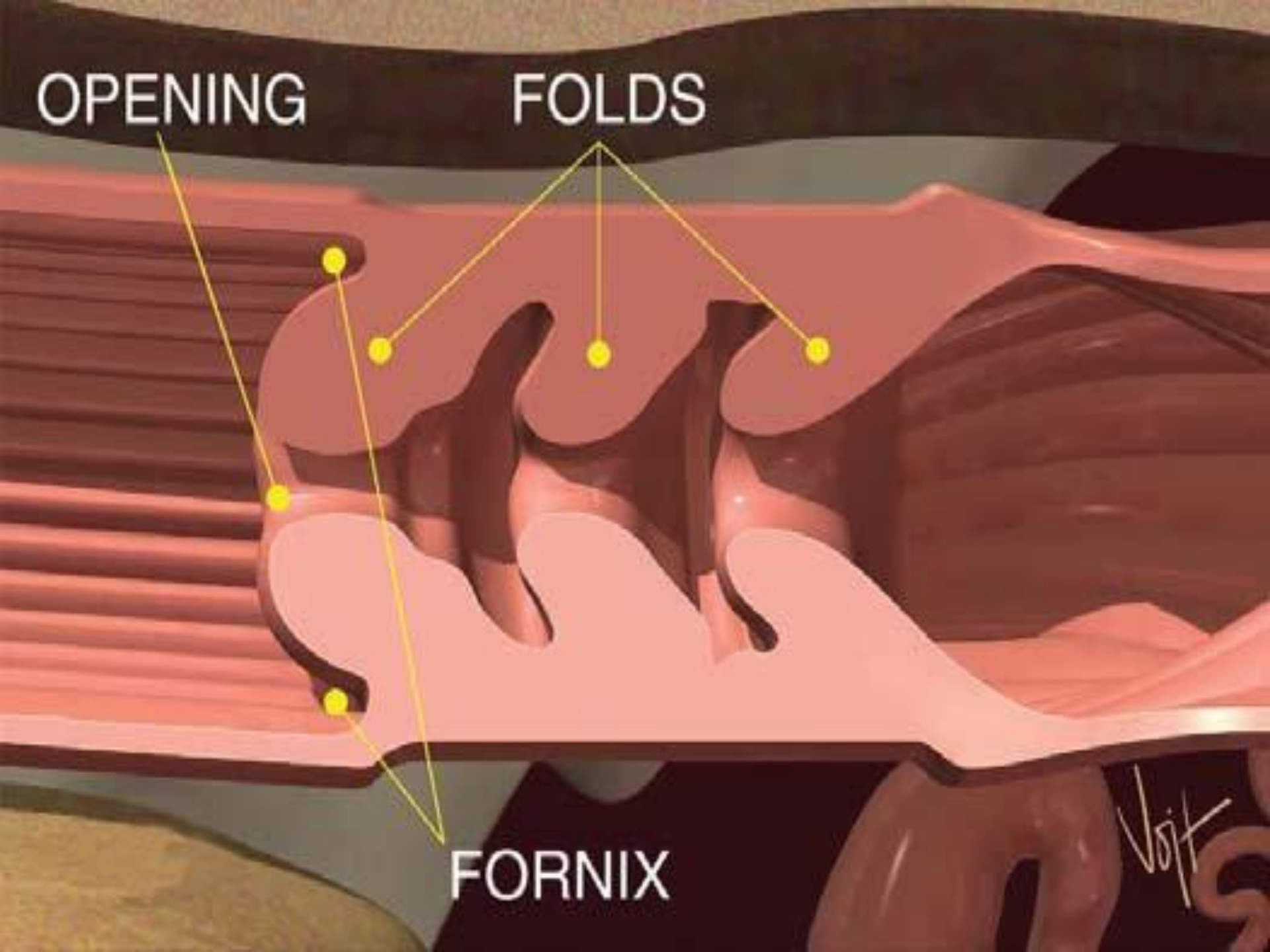




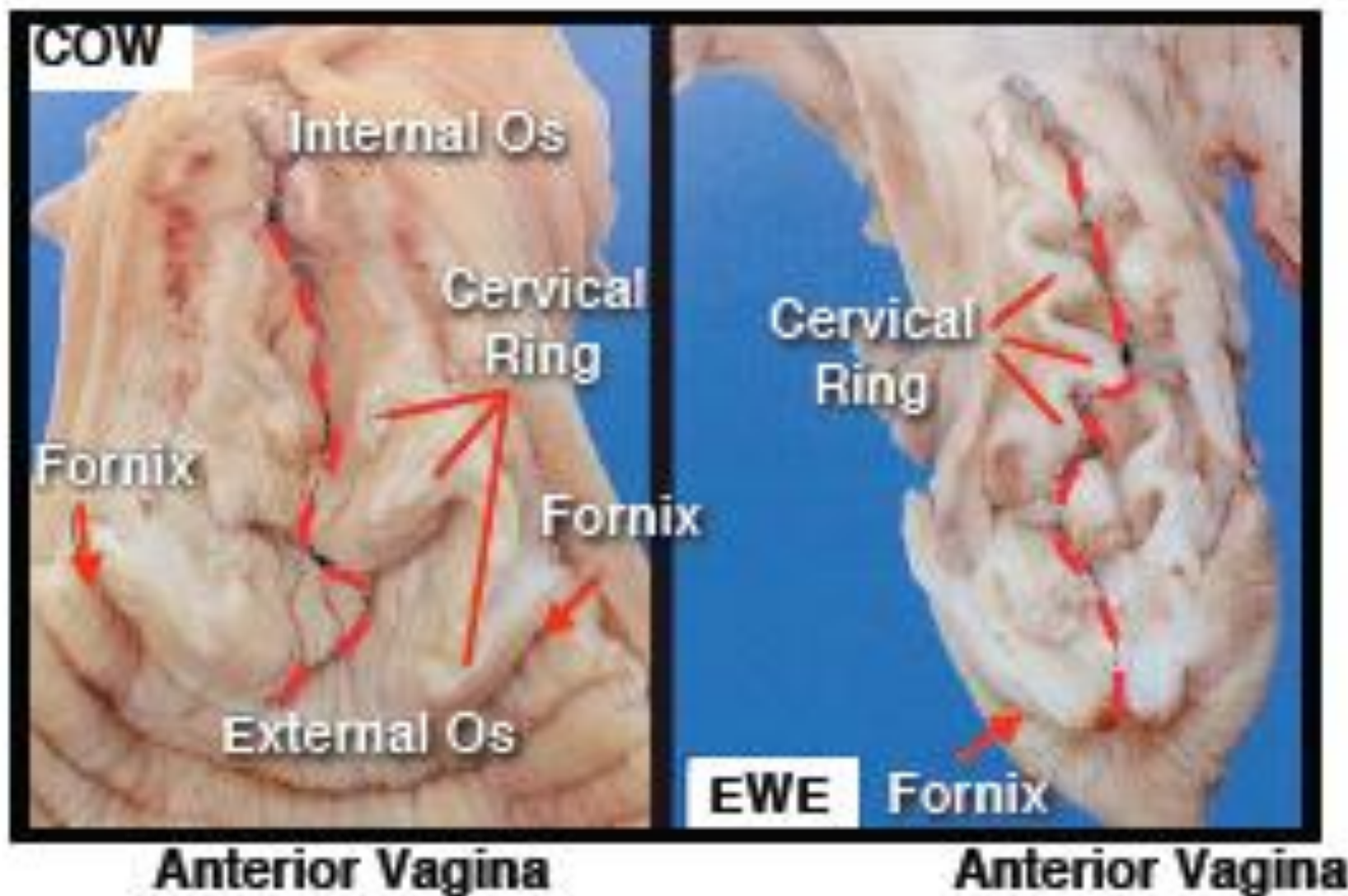
OPENING

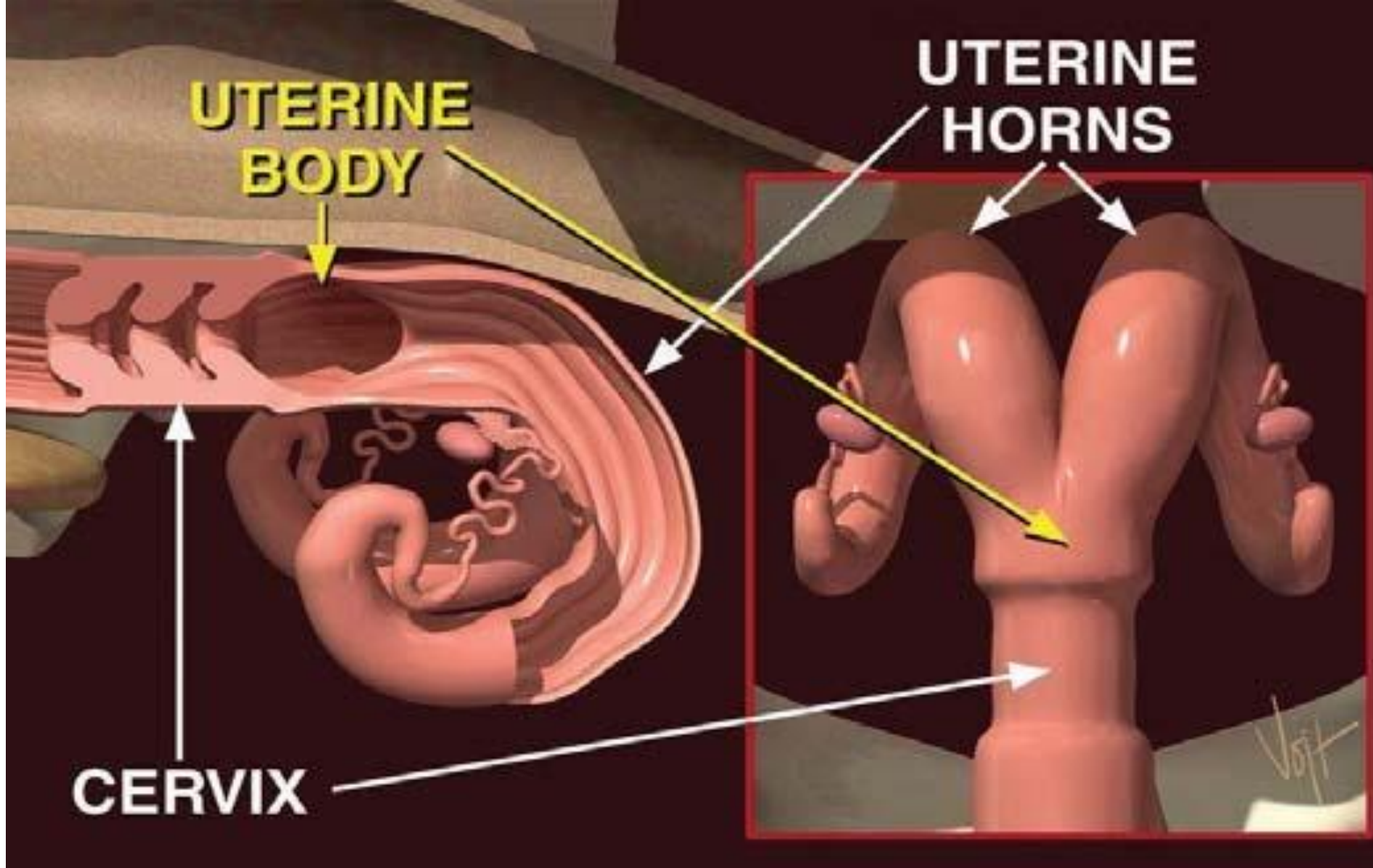
FOLDS

FORNIX

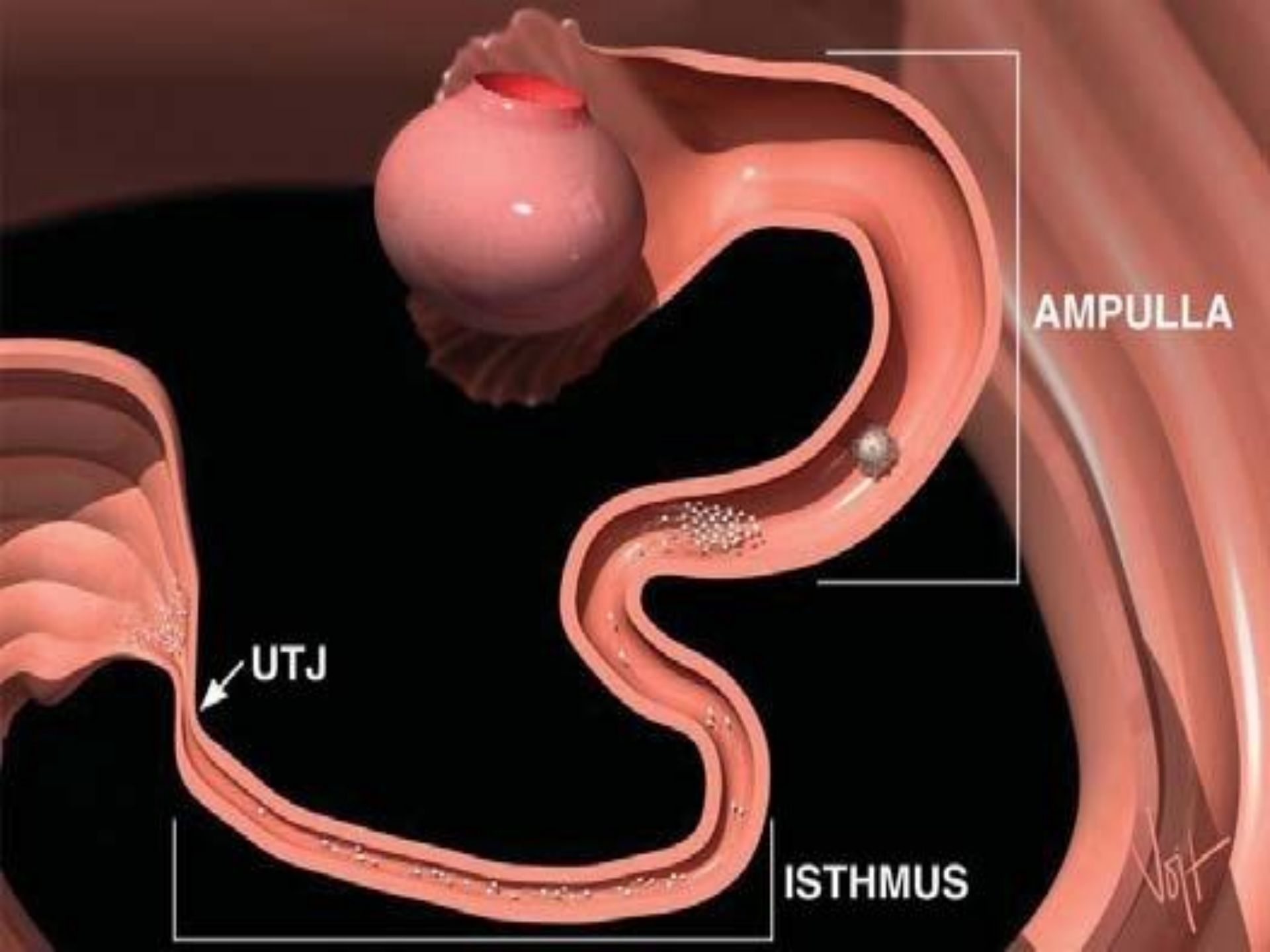


Cervix





The short uterine body divides into two long uterine horns.



AMPULLA

UTJ

ISTHMUS

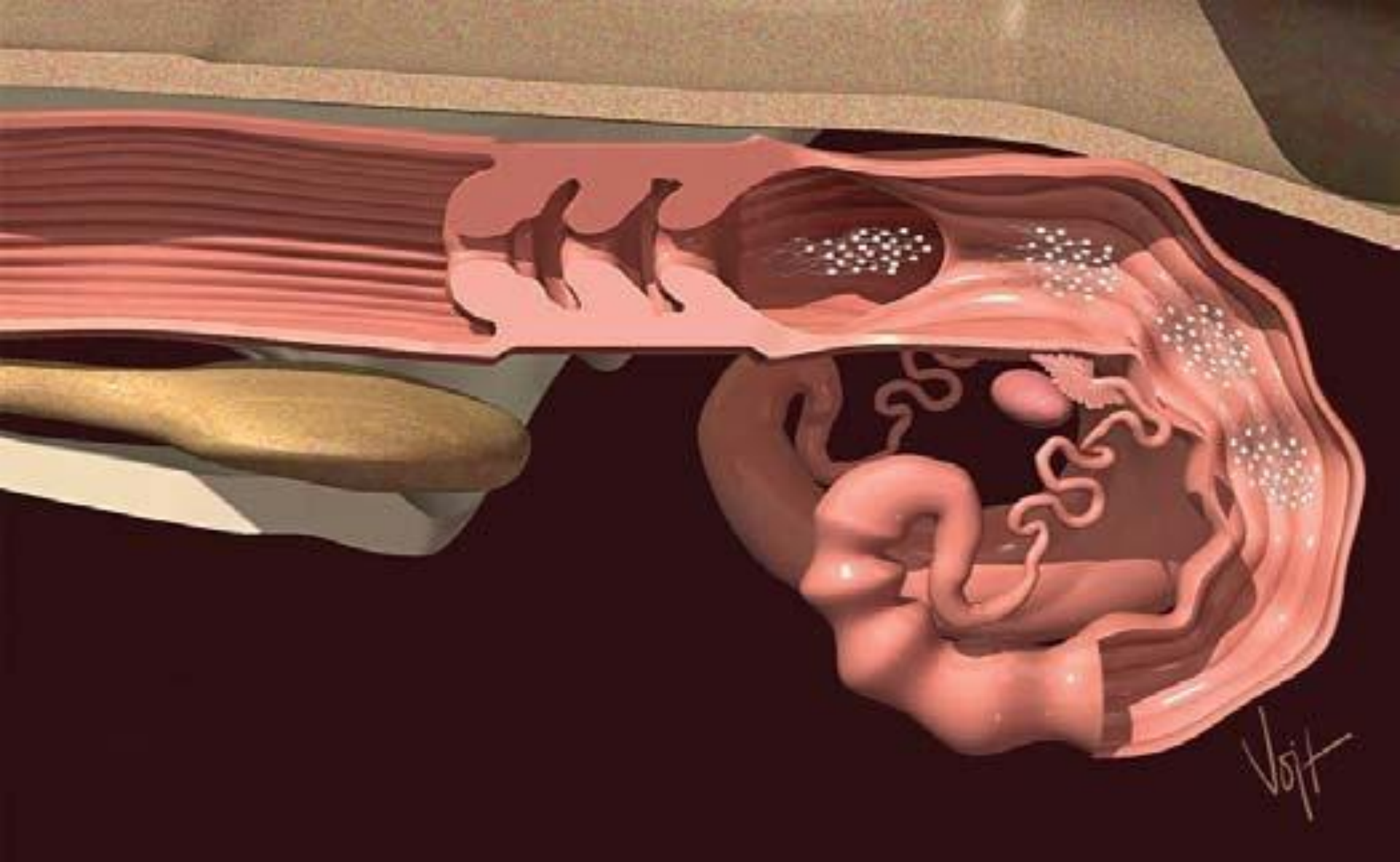
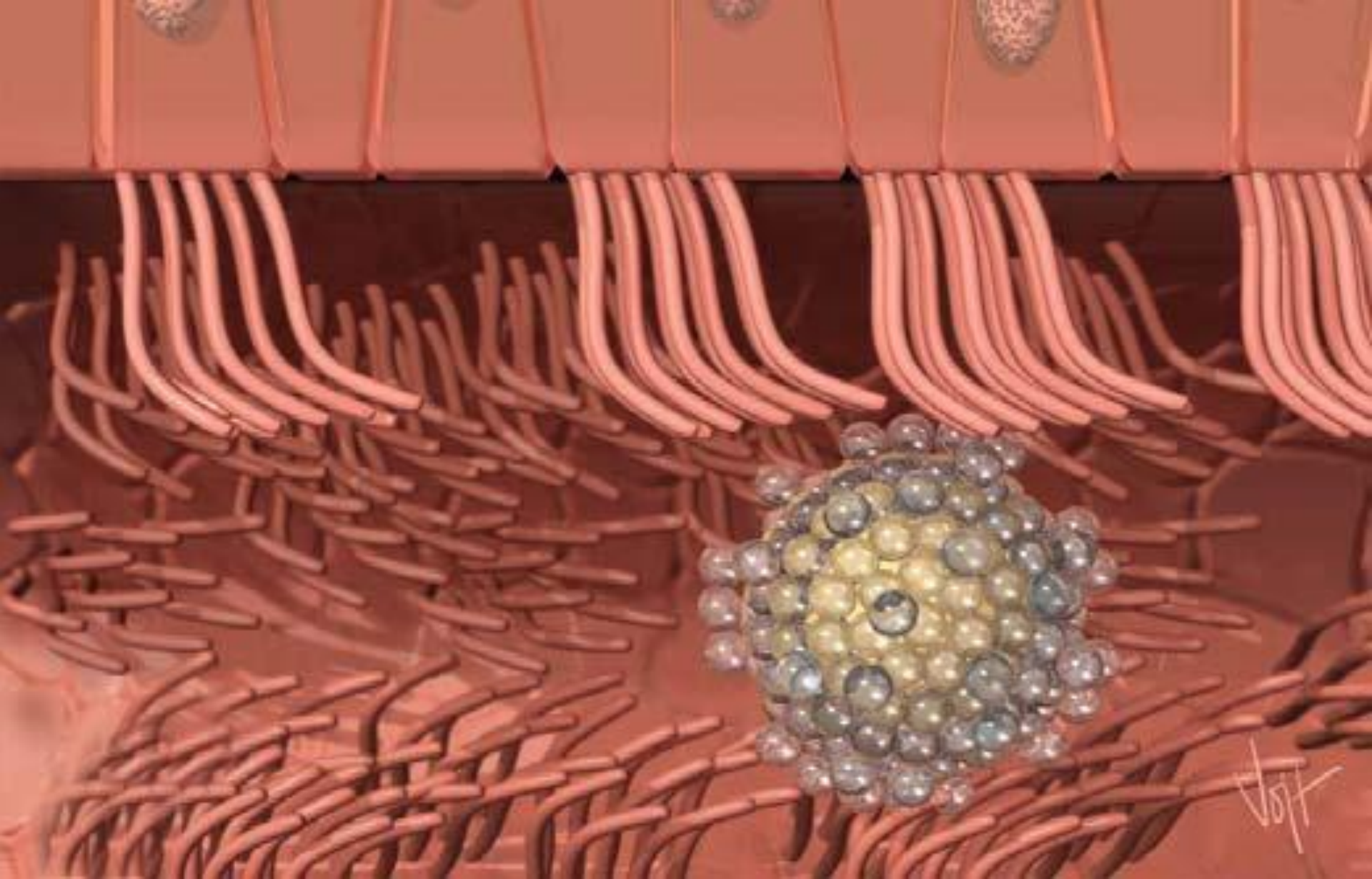


Figure 4. Uterine contractions aid in sperm transport

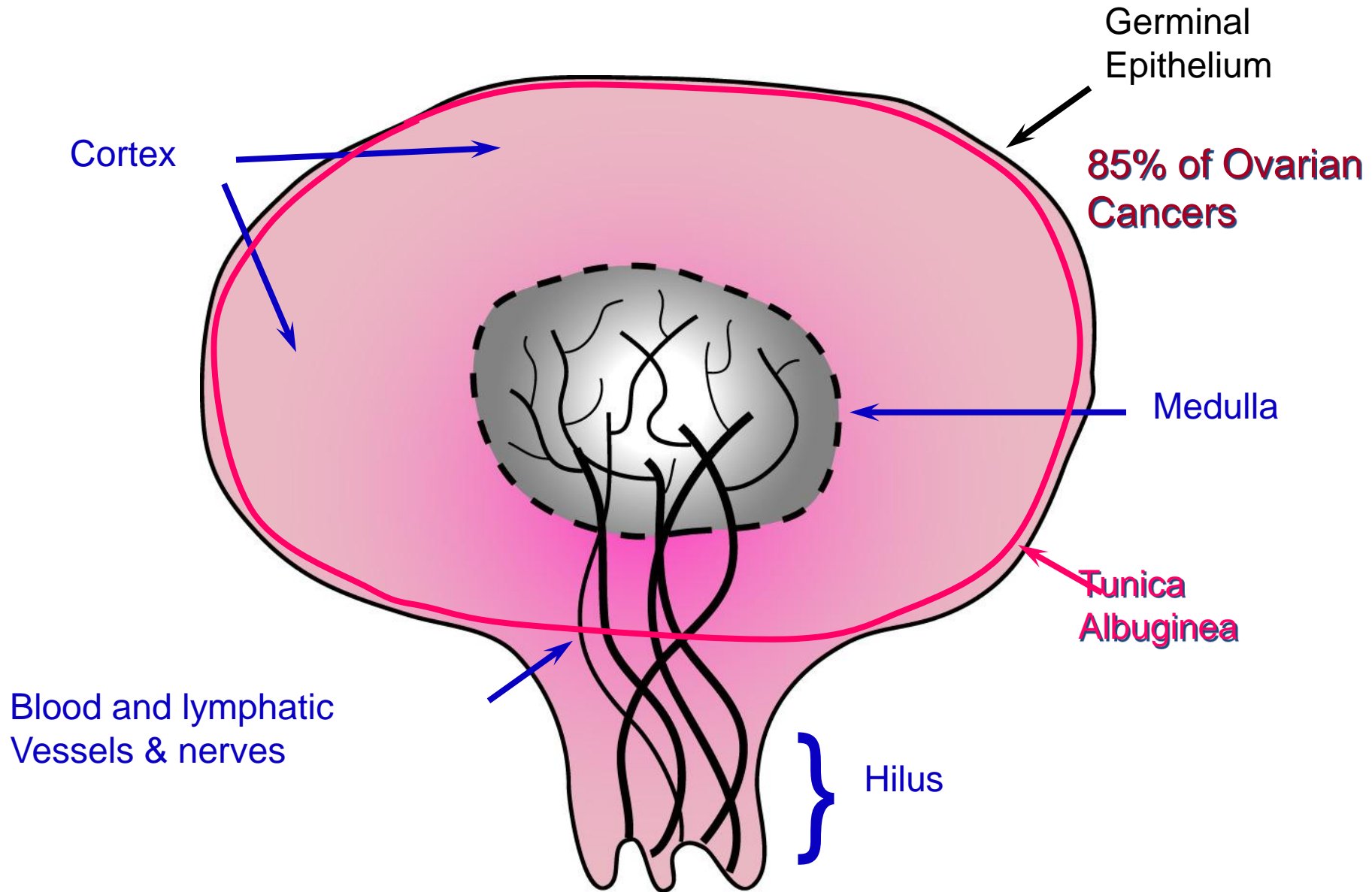


The infundibulum catches the egg from the ovary and guides it into the oviduct.

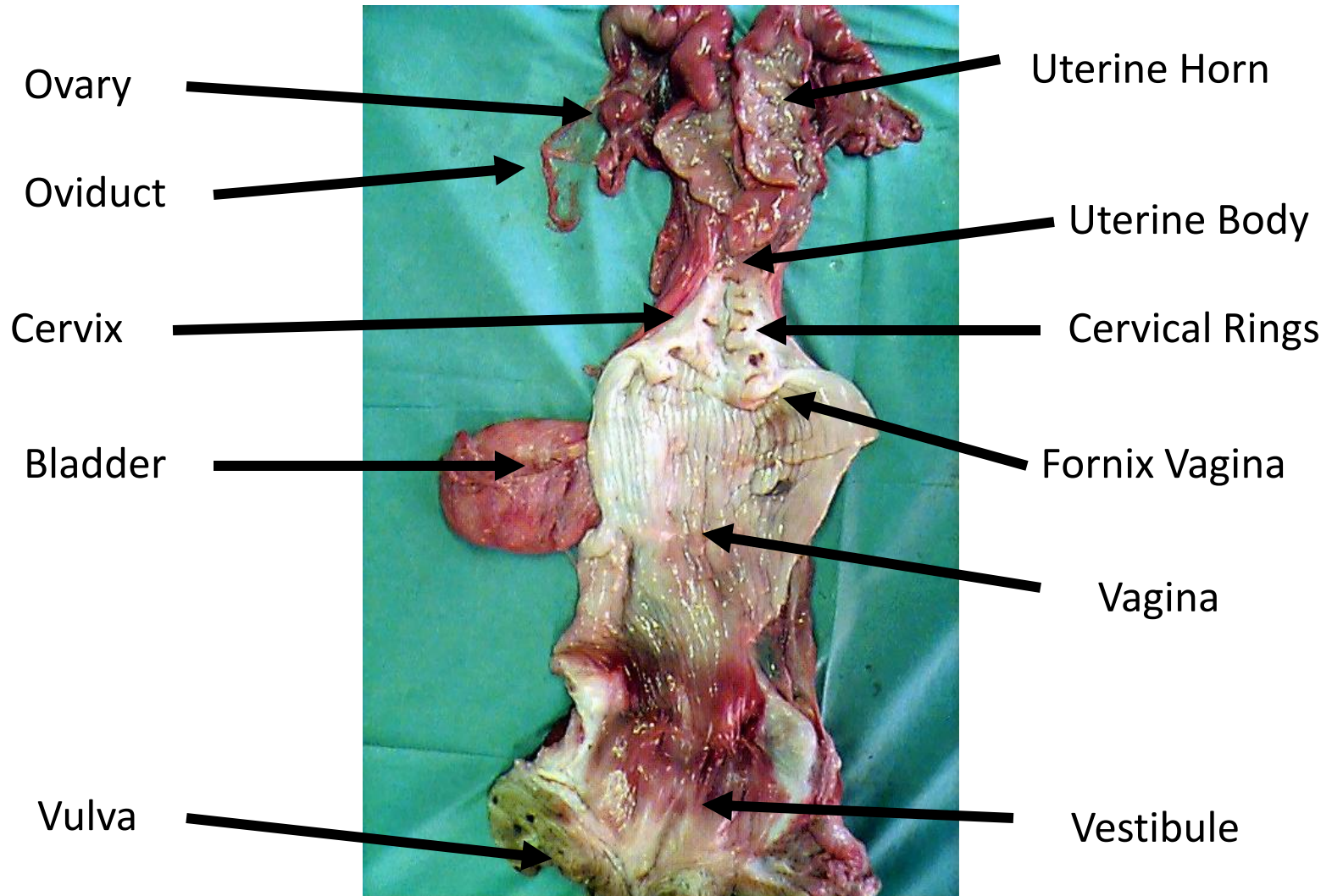


Egg and cumulus mass are transported into oviduct by hair-like structures.

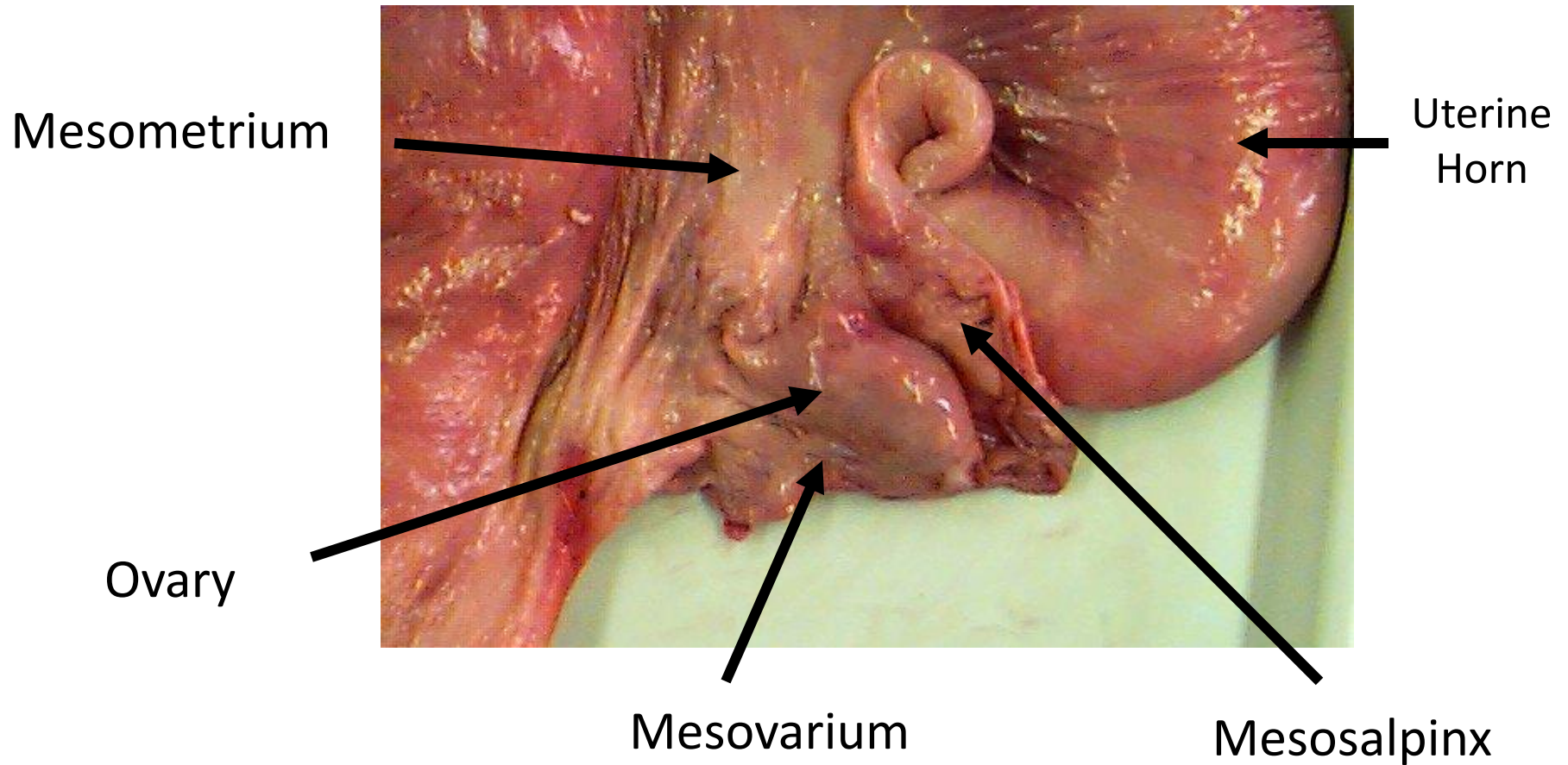
Ovary



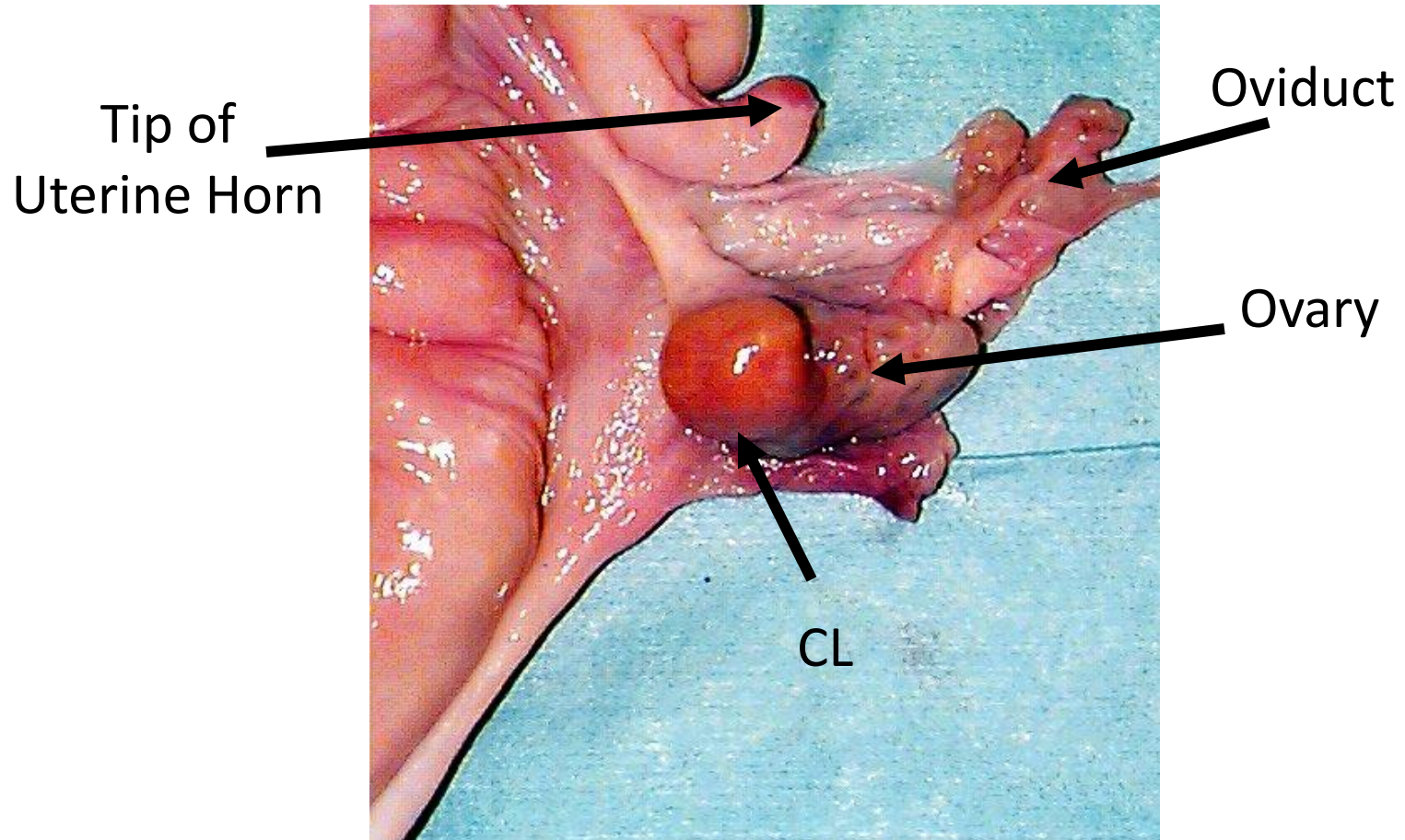
Reproductive Tract



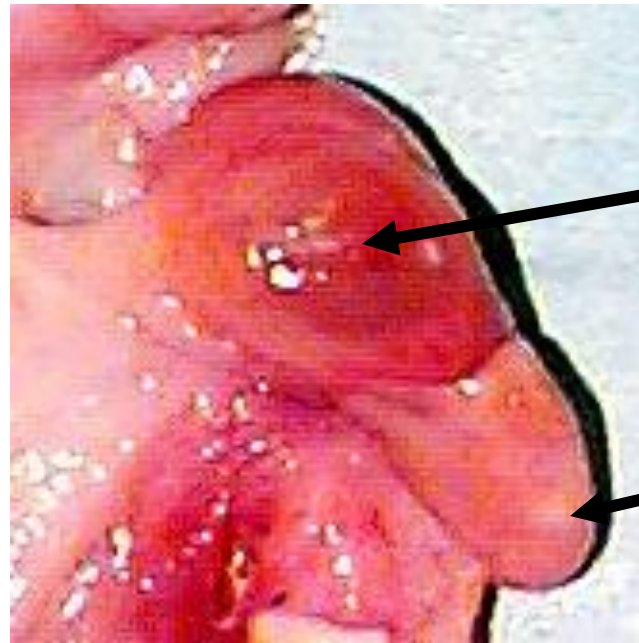
Broad Ligament



Ovary - Corpus Luteum



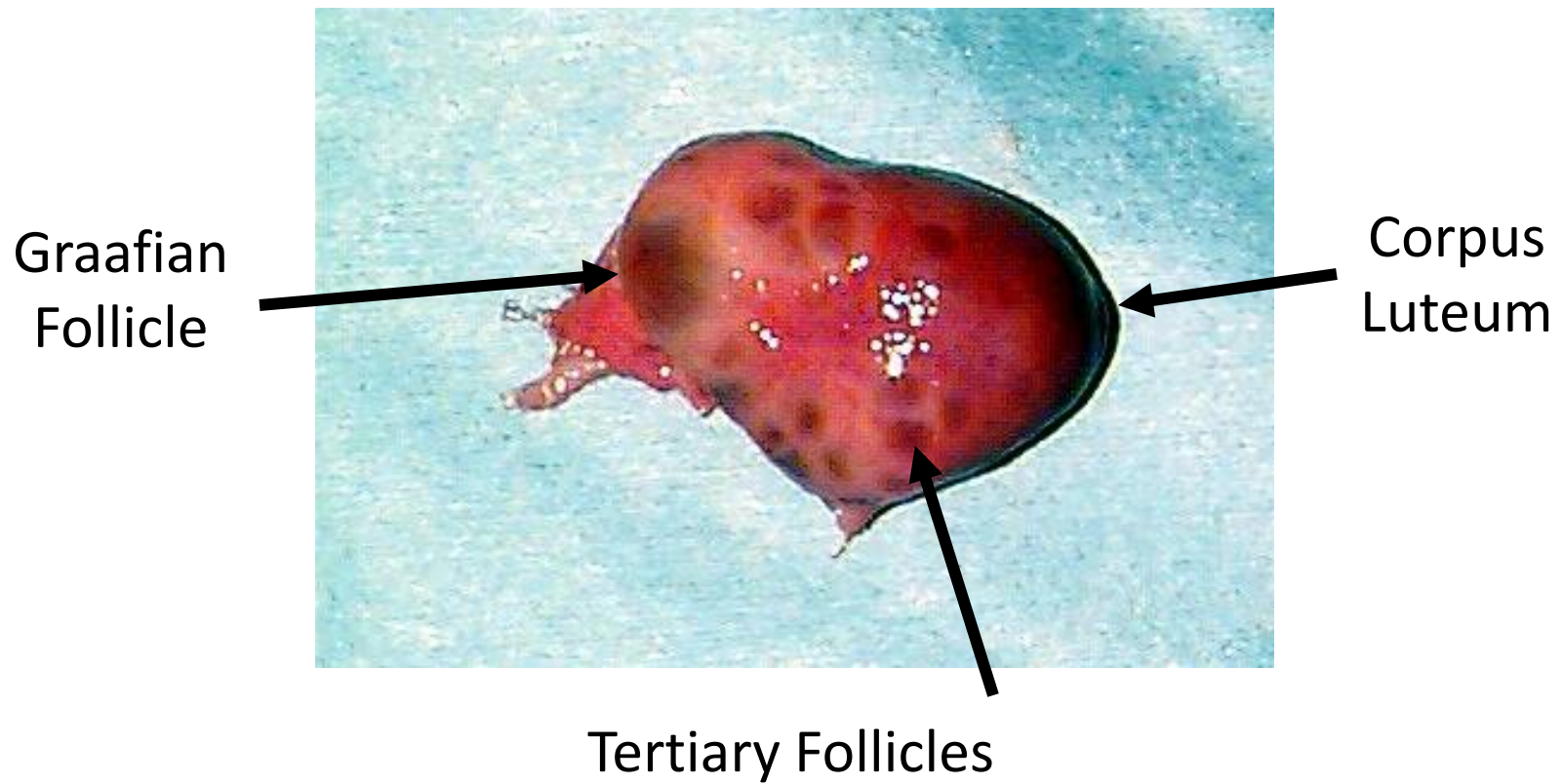
Ovary - Follicle & Corpus Albicans



Graafian
Follicle

Corpus
Albicans

Ovary - CL and Follicle



Utero-Tubal Junction

Oviduct

Ampullary-Isthmic Junction

Infundibulum

Ostium

Cumulus Oophorus and Oocyte

Ovary

Uterine Horn

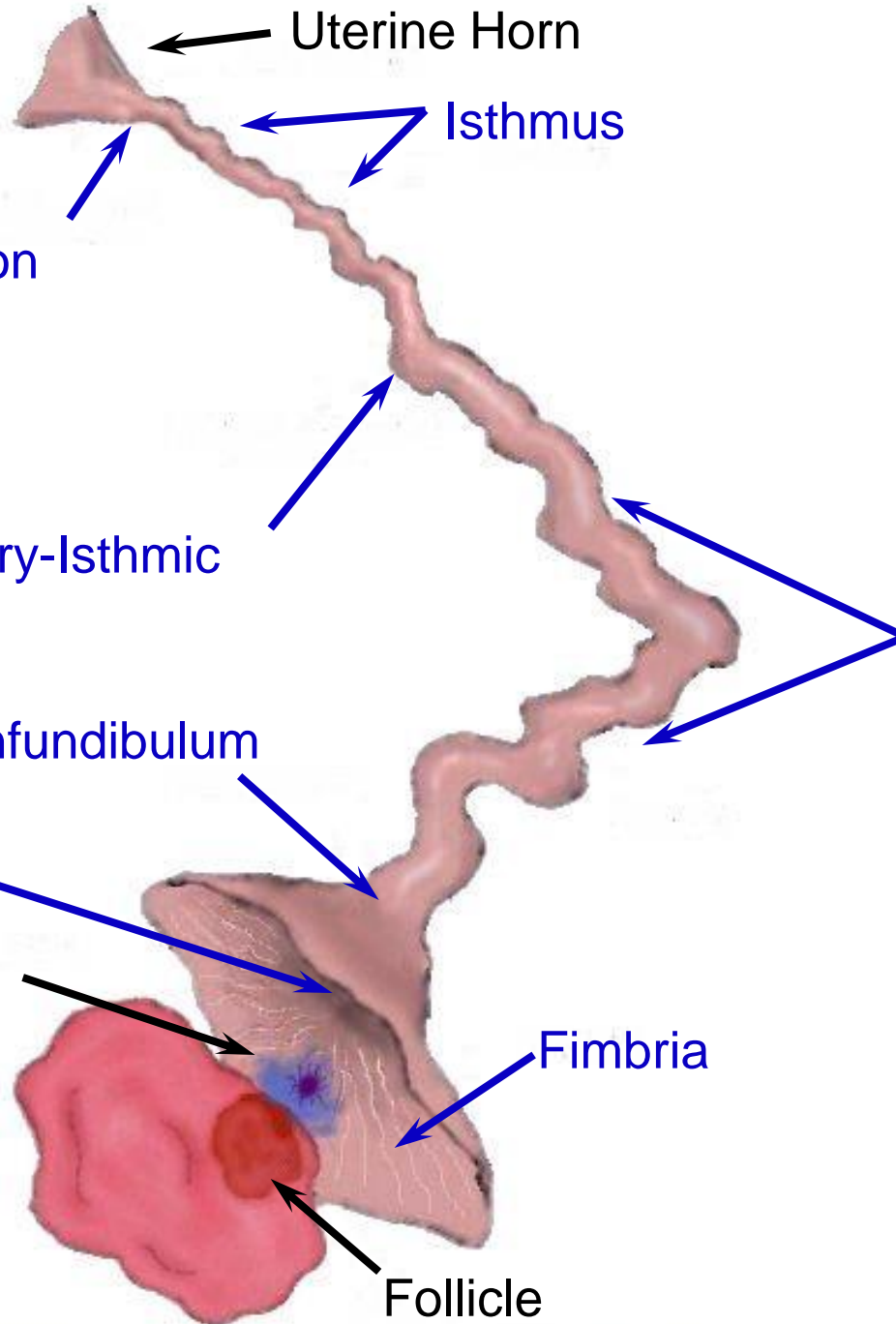
Isthmus

Ampulla

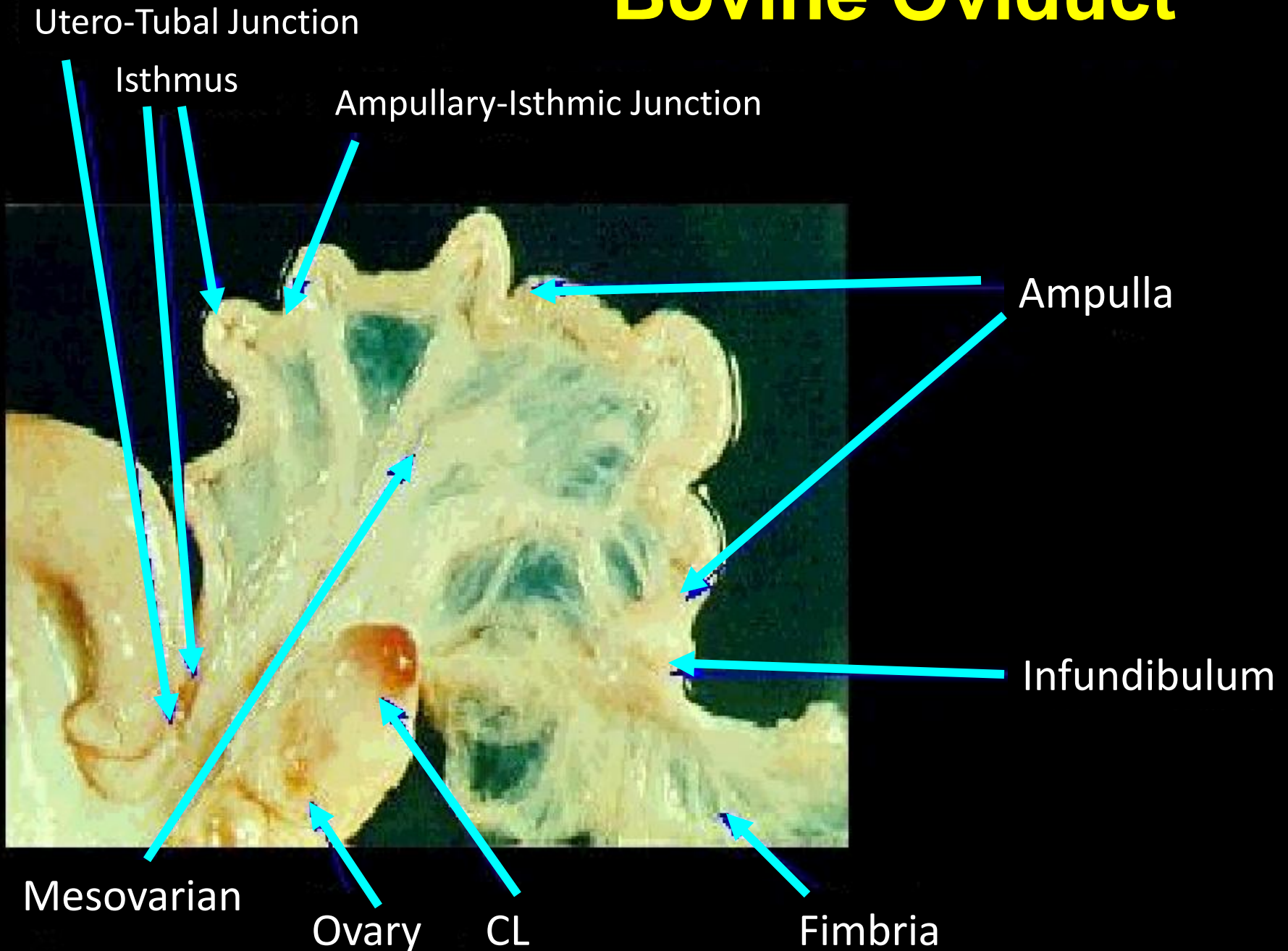
Fimbria

Follicle

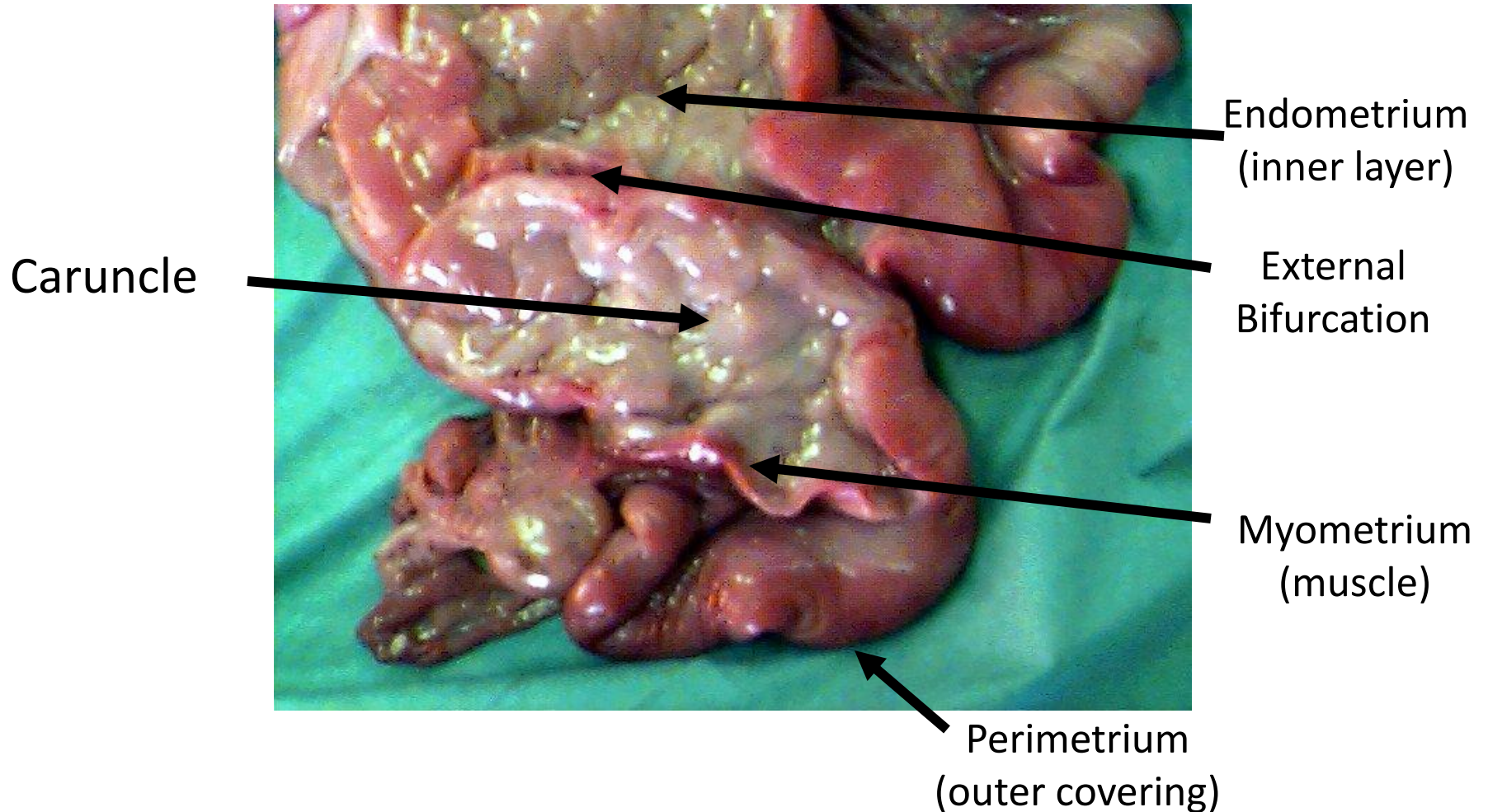
Updated:4/2/2011



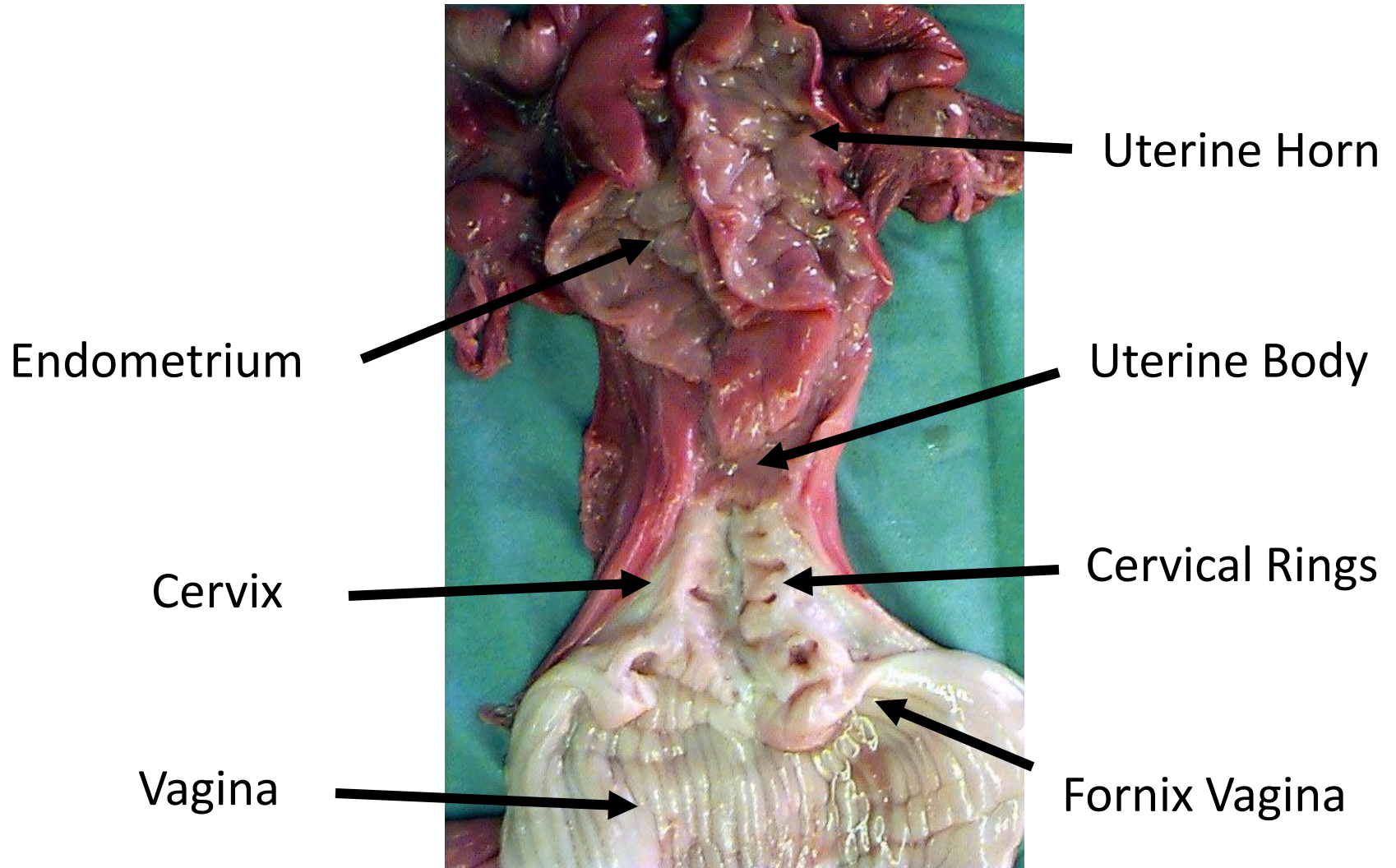
Bovine Oviduct



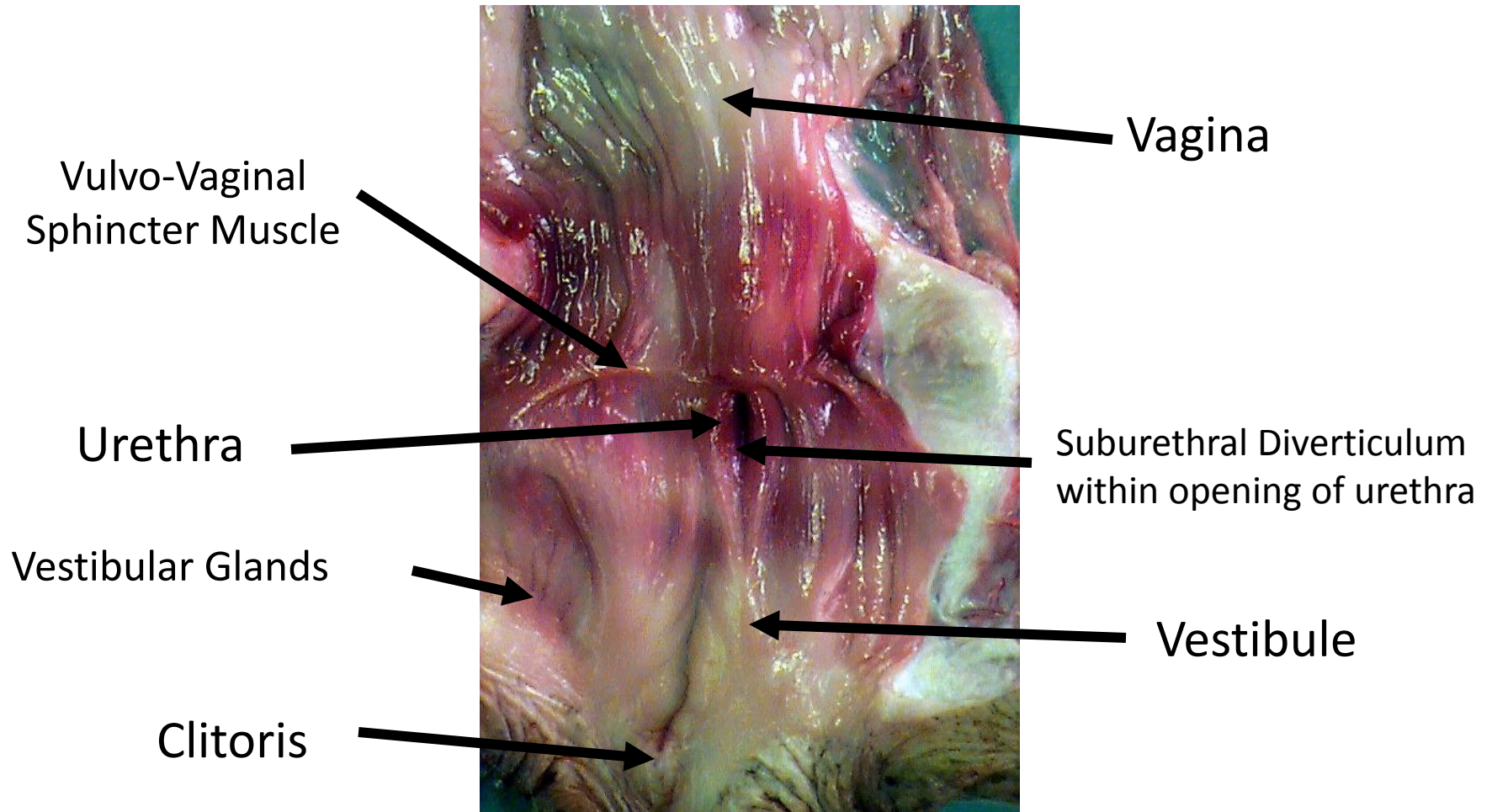
Uterine Horn



Uterus



Vagina-Urethra-Vestibule



Vagina

Anterior Vagina

Posterior Vagina (Vestibule)

