

TREMATODES

Blood Species :

- 1- *Schistosoma mansoni* : Common Name (Manson' s Blood Fluke)
Causes Intestinal Schistosomiasis .
- 2- *Schistosoma japonicum* :Common Name (Blood Fluke)
Causes Intestinal Schistosomiasis .
- 3- *Schistosoma haematobium* : Common Name (Bladder Fluke)
Causes Urinary Schistosomiasis.

Eggs :

The average *Schistosoma* eggs is comprised of developed miracidium , these eggs are oval in shape and the presence of lateral or terminal spines distinguishes the egg of one species from the other species .

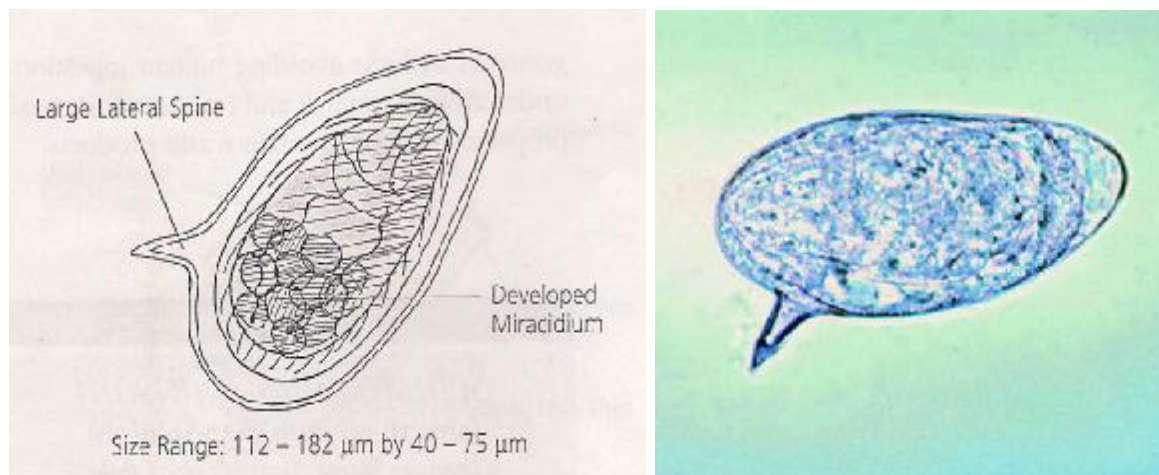


Figure (1- 1) : Egg of *Schistosoma mansoni*
*It' s have large lateral spine and developed miracidium .

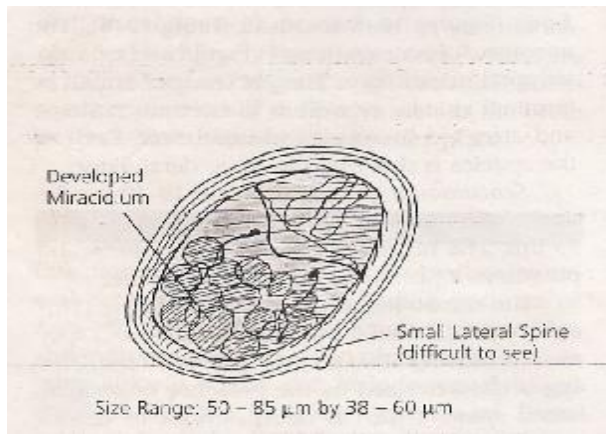


Figure (1- 2) : Egg of *Schistosoma japonicum*
 *It' s have small lateral spine and developed miracidium .

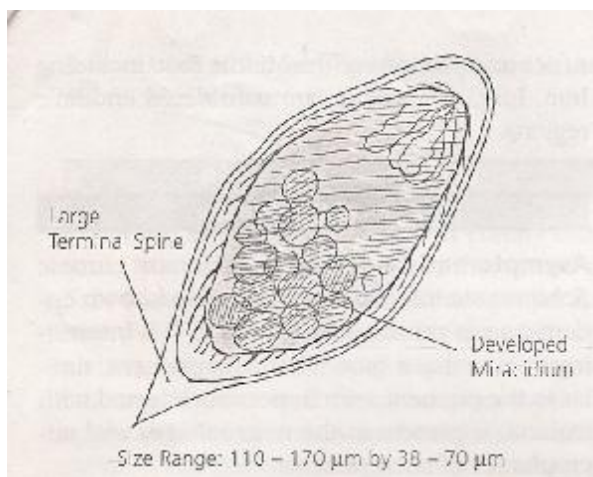


Figure (1- 3) : Egg of *Schistosoma haematobium*
 *It' s have large terminal spine and developed miracidium .

Adults : The adults of *Schistosoma sp.* are the only trematodes that have separate sexes . Unlike the other adult trematode , the Schistosomes are rounder in appearance .

Although the typical female measures 2 cm in length and the male measures 1.5 cm in length , the male has the capability to almost completely surround the female during copulation .

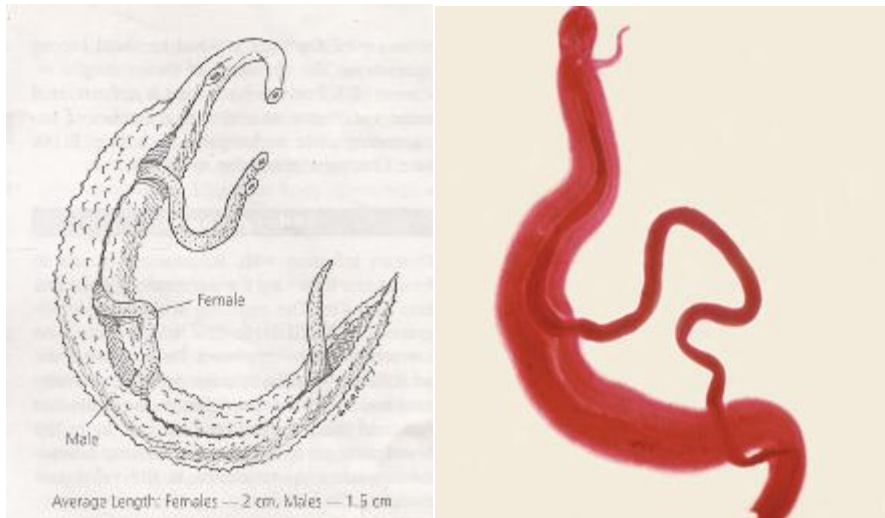
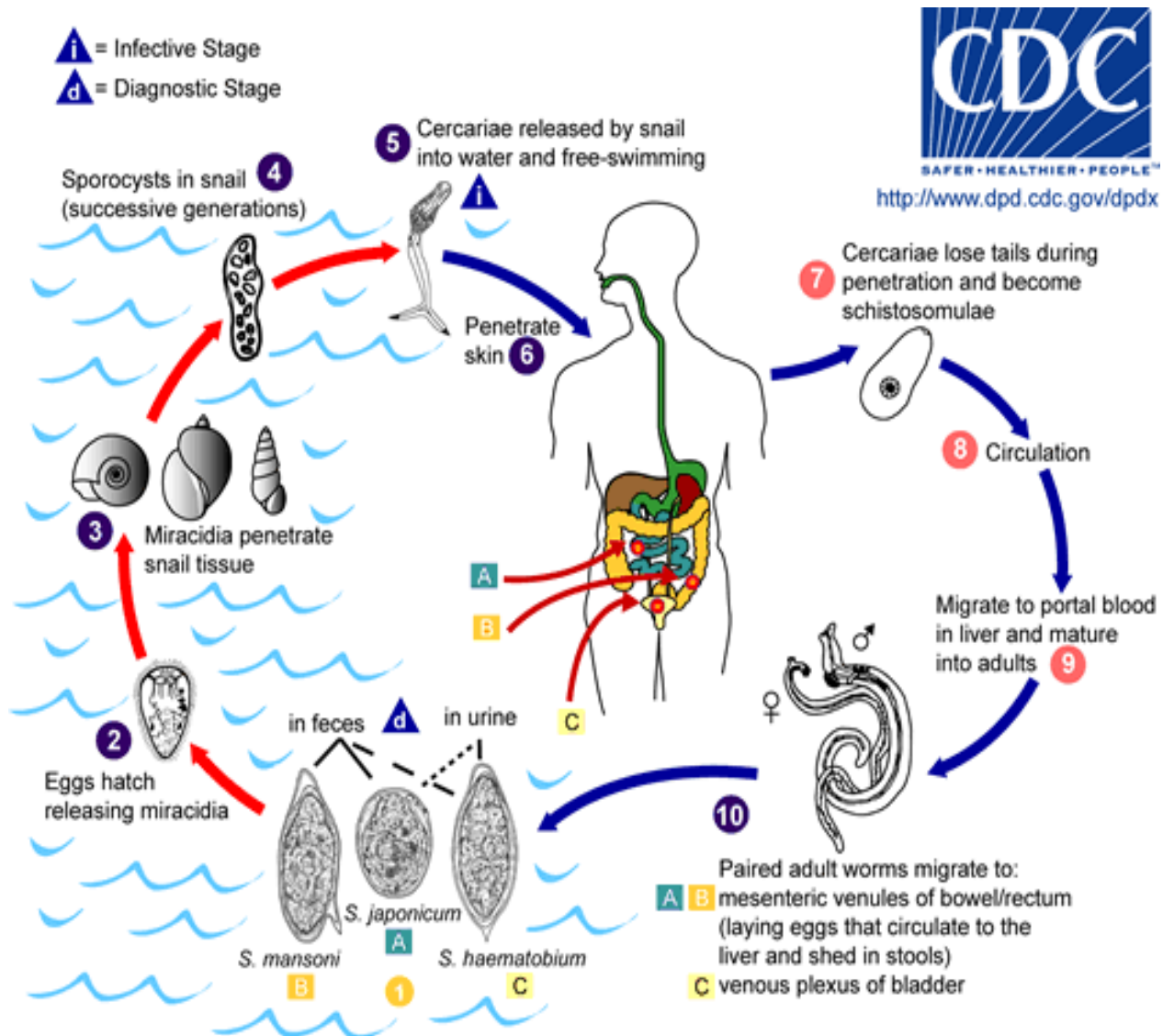


Figure (1- 4) : Schistosomes in copula.

(The Life cycle of *Schistosoma* sp.)



Notes

- *Diagnostic stage is :egg
- * Infective stage is : cercaria
- * Final host is : human
- * Intermediate is : snail

Table (1): Differentiation between *Schistosoma sp.*

Properties	<i>Schistosoma mansoni</i>	<i>Schistosoma japonicum</i>	<i>Schistosoma haematobium</i>
1- natural habitat	Adult live in vein of large intestine	Adult live in vein of small intestine	Adult live in vein of urinary bladder
2- male (No. of tests)	6 - 9	7	4 - 5
3- Female (Situation of ovary)	Near the anterior end	In the middle	Near the posterior end
4- Length of uterus	Short	medium	medium
5- Shape of eggs	Oval , with large lateral spine	Oval to rounded, with small lateral spine	Oval , with large terminal spine
6- Lab. Diagnosis	Fecal examination	Fecal examination	Urine examination
7- Disease name	Intestinal Schistosomiasis	Intestinal Schistosomiasis	Urinary Schistosomiasis