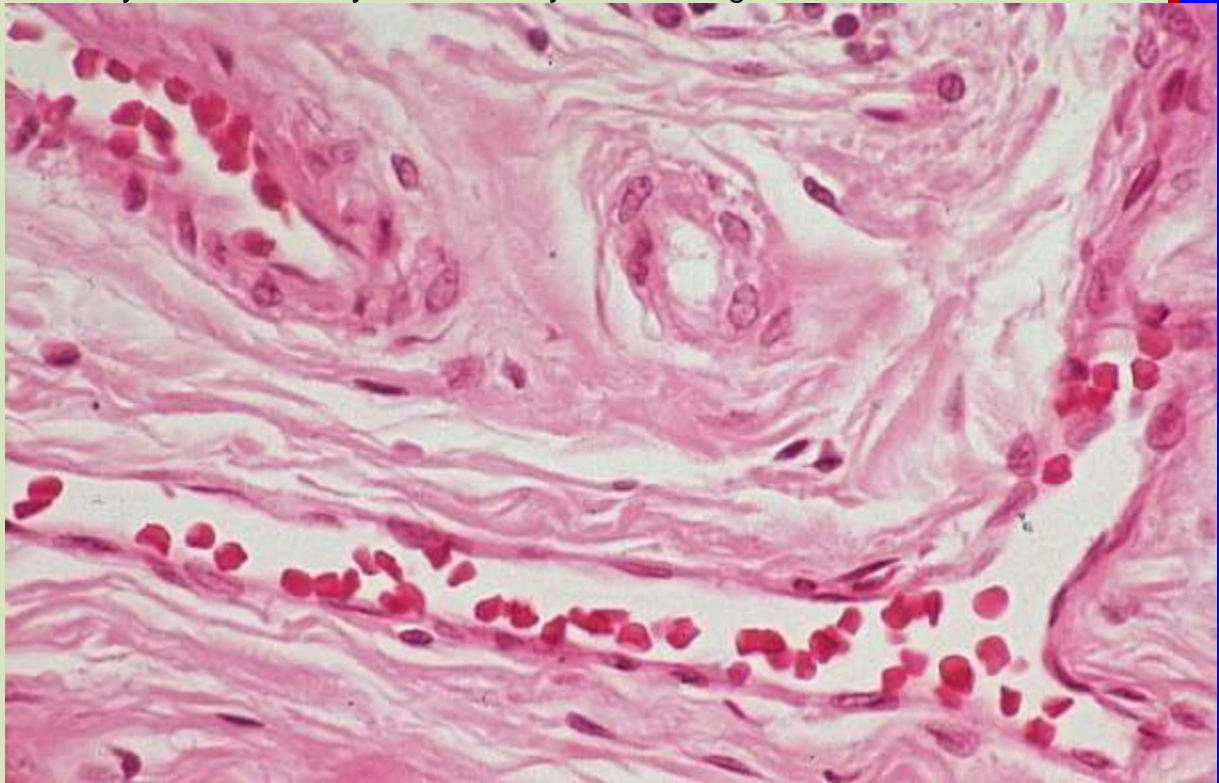


**What is the difference between an artery and an arteriole, or a vein and a venule?**

Both types of blood vessel have an inner lining of simple, flat cells called "endothelium". They often, but not always, contain at least a few red blood cells.

Except for one curious exception in the ear, blood vessels run only through fibrous tissue, never through epithelium. Even in muscle and nervous tissue, they are always surrounded by at least a tiny rim of collagen fibers.



This is a bit of fibrous tissue bearing two arteries and a vein.

find:

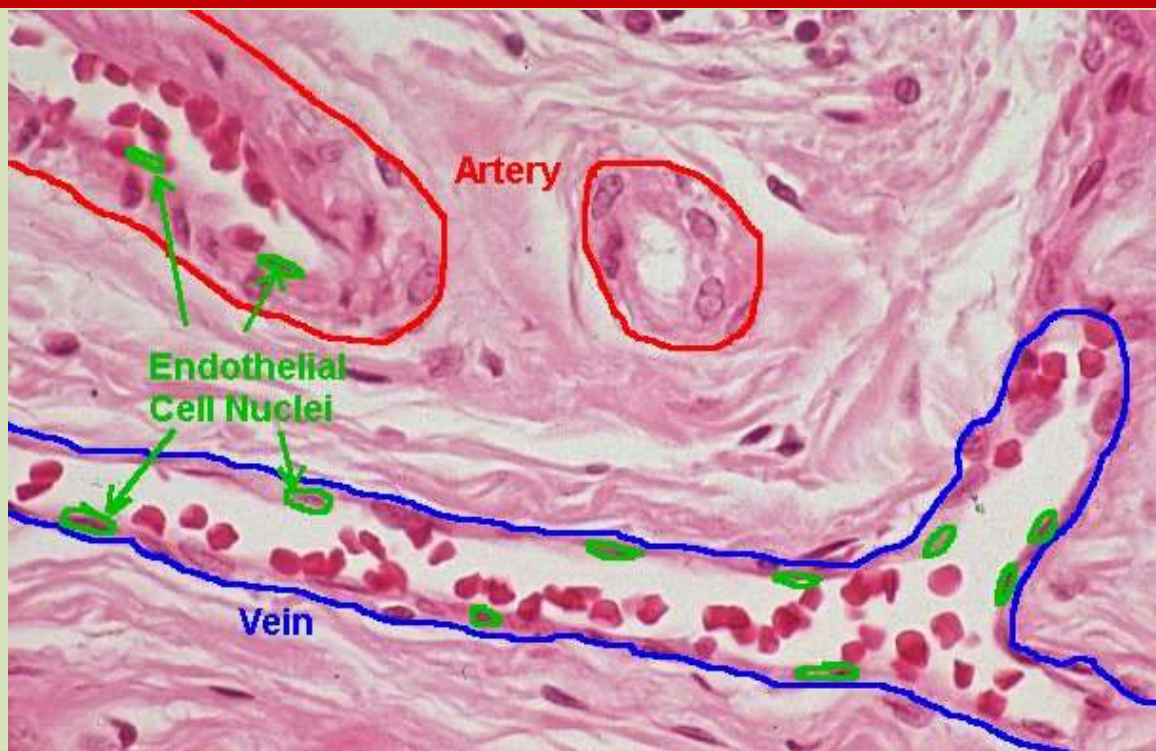
- the two arteries

- the vein

- the endothelial cells

Do you think the two cross-sections of artery might really be the same artery, looping in and out of the plane of section?

answer



United States Pronunciations:

- Endothelium: enn-doe-THEE-lee-um (unvoiced th)

Roots:

- -le, -ule: little

- end-: inside